

## Contact Details

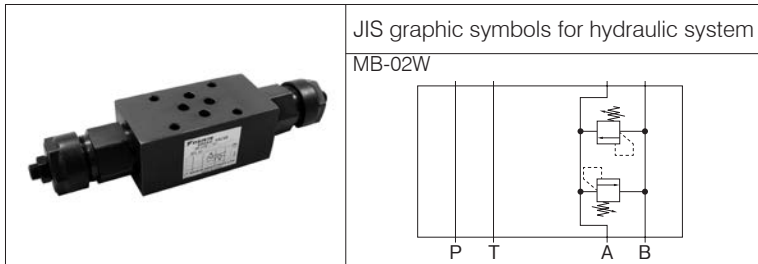
Before using the product, please check the guide pages at the front of this catalog.

Internet

<https://www.daikinpmc.com/en/>

For latest information, PDF catalogs and operation manuals

# 02 Series Stacking Type Brake Valves



## Nomenclature

※ - MB - 02 W - ※ - 65

1      2      3      4      5      6

### 1 Applicable fluid code

No designation: Petroleum-based hydraulic fluid,  
water-glycol hydraulic fluid  
F: Phosphate ester hydraulic fluid

### 2 Model No.

MB: Modular stacking type brake valve

### 3 Nominal diameter

02: ¼

### 4 Control port

W: Port A/B

### 5 Pressure adjustment range

1: 0.8 to 7 MPa { 8 to 70 kgf/cm<sup>2</sup> }  
3: 3.5 to 21 MPa { 35 to 210 kgf/cm<sup>2</sup> }

### 6 Design No.

(The design No. is subject to change)

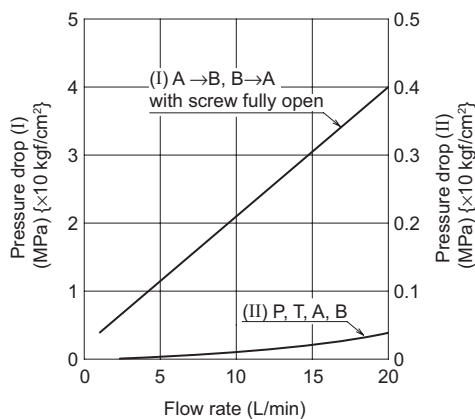
## Specifications

Model code	Maximum operating pressure MPa {kgf/cm <sup>2</sup> }	Maximum flow rate L/min	Pressure adjustment range *1 MPa {kgf/cm <sup>2</sup> }	Mass kg	Pressure change MPa {kgf/cm <sup>2</sup> } per screw revolution
MB-02W-1-65	35 {350}	20	0.8 to 7 ( 8 to 70)	1.5	1.4 {14}/revolution
MB-02W-3-65			3.5 to 21 (35 to 210)		6.3 {63}/revolution

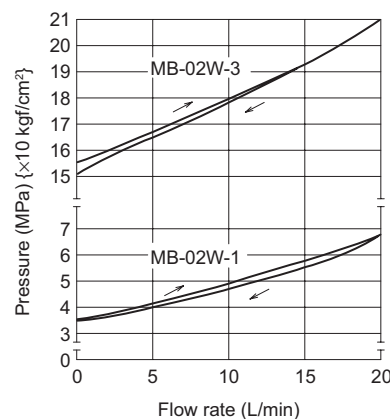
Note: \*1 The pressure adjustment ranges are indicated using cracking pressures.

## Performance curves (viscosity: 32 mm<sup>2</sup>/s {cSt})

Pressure drop characteristics



Pressure - Flow rate characteristics



## Contact Details

Before using the product, please check the guide pages at the front of this catalog.

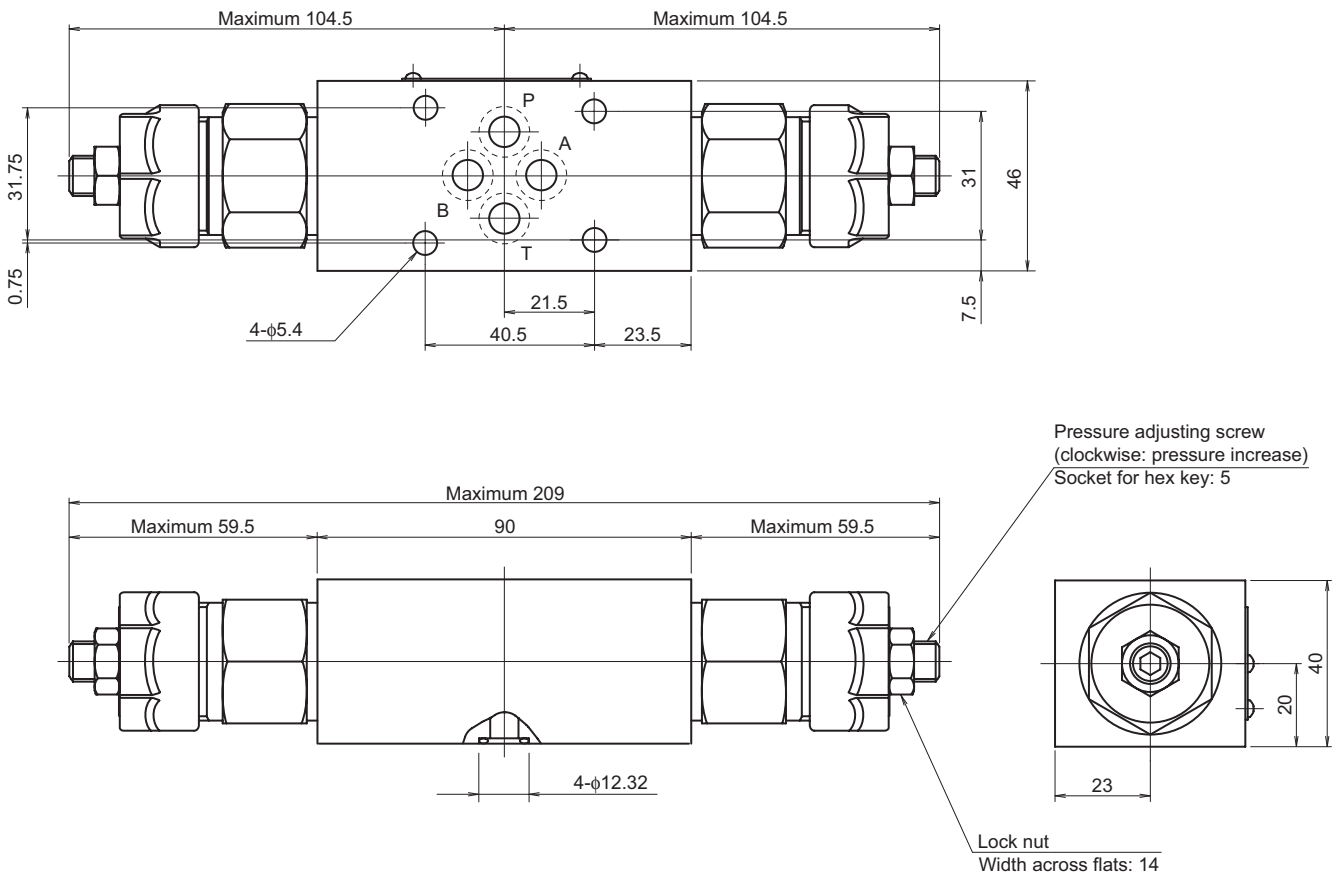
Internet

<https://www.daikinpmc.com/en/>

For latest information, PDF catalogs and operation manuals

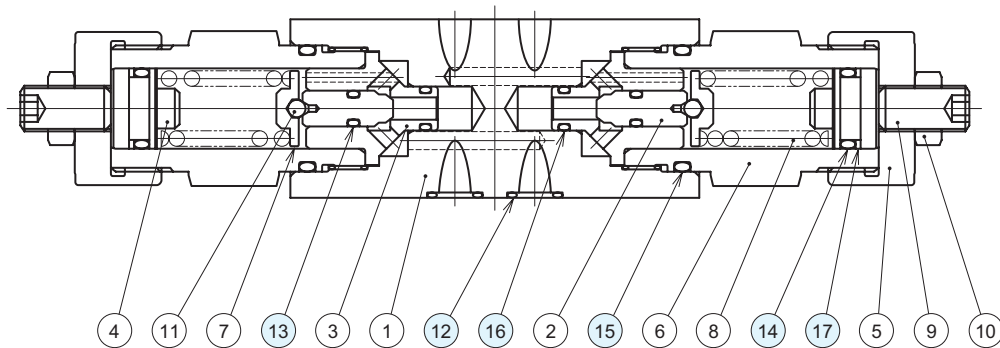
## External dimension diagram

MB-02W



## Sectional structural diagram

MB-02W



Sealing part table

Part No.	Name	Quantity	Part specifications
12	O-ring	4	AS568-012 (NBR, Hs90)
13	O-ring	2	JIS B 2401 1A P5
14	O-ring	2	JIS B 2401 1B P14
15	O-ring	2	AS568-119 (NBR, Hs90)
16	O-ring	2	JIS B 2401 1B P7
17	Backup ring	2	JIS B 2407 Bias cut P14